

## **GPS Limitations : The Truth Telus Doesn't Want You To Know**

*I am writing this article because I have spent many hours researching and finding a hack to remove the limitations regarding 3<sup>rd</sup> party GPS applications on my Telus Blackberry Pearl 8130.*

*Because Telus refuses to admit that they have limited 3<sup>rd</sup> Party GPS application capabilities on every occasion I have called or emailed them. I have finally decided to fight back and explain in simple terms to the world exactly how and why they are doing this to their customers. And encourage you to take action towards Telus by calling and emailing them with your comments.*

If you are a Telus Blackberry owner, and previously enjoyed having the function of free GPS. You may have noticed that since approx June 2009, if you are using a 3<sup>rd</sup> party application such as Google Maps, or Blackberry Maps, that the accuracy of your GPS has been severely limited. For example if you use Google Maps, and choose "My Location" you will find that it will only give your position within 2300 meters, to give you an idea, that is 2.3 Kilometers, which can be a very big issue if you are looking to Get accurate directions to a location, where you are, etc...Many of you we also recall that before June 2009, you were able to grab your location within 4 to 10 meters, maybe 20. Even then that is only a maximum of 60 feet.

I have taken screen shots to show an example of before with the limitations in place and after completing the hack. As you can see, a HUGE difference.



The truth that Telus won't admit, and doesn't want you to know, is that they have limited GPS function on 3<sup>rd</sup> Party Applications to force their customers to pay \$10.00 per month ON TOP of their Data and Voice package for Telus Navigator. Here is the way it works. Your phone has 8 GPS Capabilities which are as follows:

- Assistance-Spherical
- Assistance-Cartesian
- AFLT
- GPS Almanac
- GPS Ephemeris
- GPS Almanac Correction
- Autonomous
- GPS/AFLT Hybrid

Telus has made changes so that the only time that all 8 of these GPS Capabilities are active, is when you download and install their Telus Navigator software. If you run a 3<sup>rd</sup> party application, the only one that is active above is the "Assistance-Spherical" which severely limits the amount of satellites your phone can access, the speed it accesses them and the accuracy of your location.

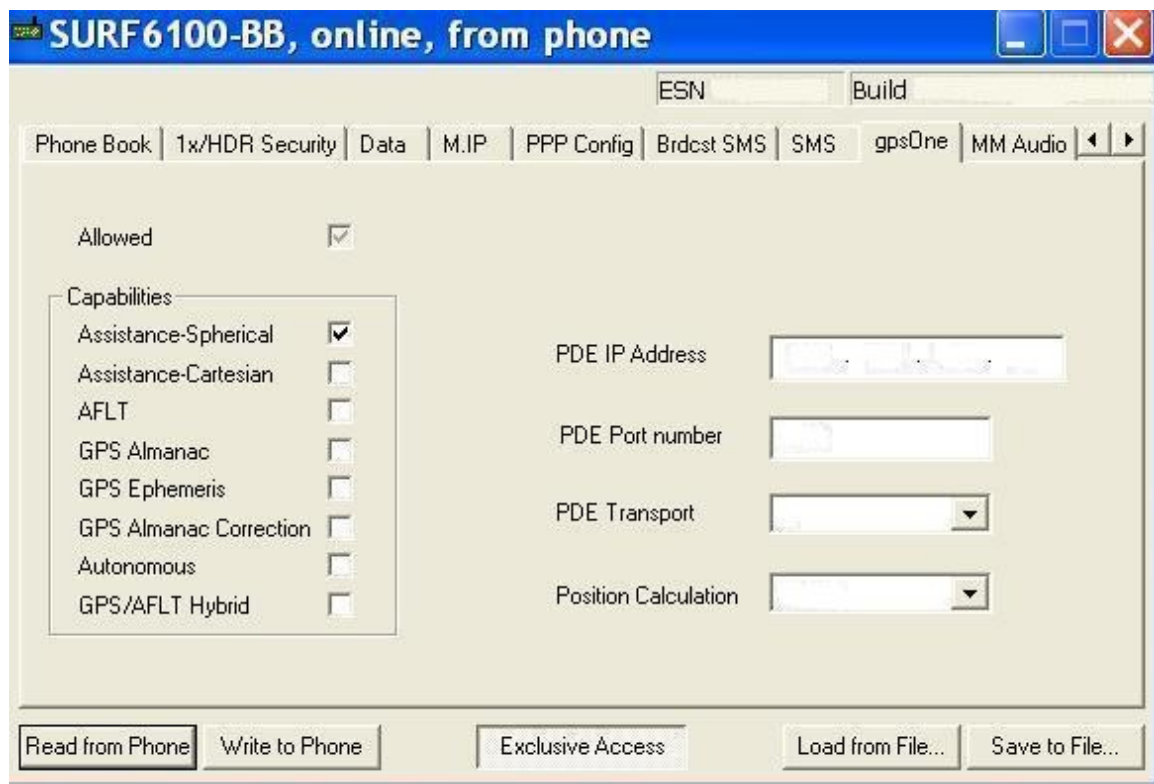
Many have said that a work around is to download Navigator, install, then run it, and that will unlock the GPS. This is not true, it will only work if Navigator is running in the background. Once you close Navigator. Back to only "Assistance-Spherical."

Below is an actual “BEFORE” screen shot taken from a Blackberry Pearl 8130 on the Telus Network.

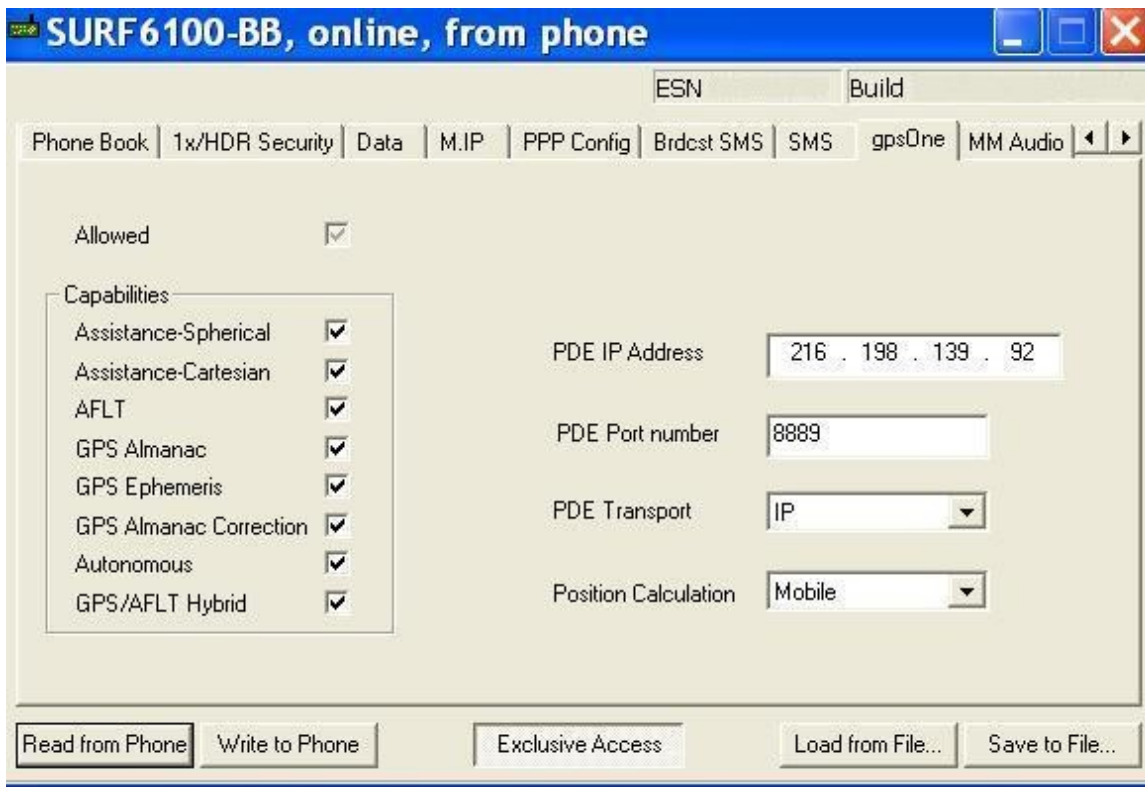
Using a program called QPTS, this stands for Qualcomm Product Support Tool.

In simple English, it’s a program that allows the user to connect your phone via a data cable to your PC, and make changes to the phones programming. It is normally used by service centers, and not your typical end user.

You will notice that in the screen show below. You can clearly see the 8 GPS “Capabilities” I noted earlier, and only one box checked. This is default for a Blackberry from Telus, and proves that they are limiting your GPS capabilities.



Now, in this next screen show, you will notice the “AFTER”, again after doing some research, I was able to use QPTS to read my phones data, and manipulate it’s settings, so that I was able to activate all 8 of the GPS Capabilities, as is the way it should have always been. The information you see on the right hand side was found via Google searches.



After completing the hack, I am now able to use any 3<sup>rd</sup> party GPS application, and find satellites in a split second and my location within 4 meters on a clear day.

If you would like an EXCELLENT Guide/How To PDF on how to hack your own phone to allow you to make the changes as shown above, and to not be forced to pay \$10.00 a month for Telus Navigator, I have included the link below, in order to have access to this PDF, you will have to register on crackberry.com, it is however free, and full of excellent information.

**<http://forums.crackberry.com/attachments/f41/21266d1239647094-real-fix-broken-gps-guide-v1-0-how-get-your-gps-work-blackberry.pdf>**

For those that don't feel comfortable doing this sort of hack on your phone, and still want to have full access to your GPS via 3<sup>rd</sup> party applications. I would strongly suggest calling and emailing Telus until they stop denying what they are doing, and release this limitation. We pay enough as it is!