

My Location User Guide

1. Introduction

The concept of the application is very simple. If your Blackberry has access to Internet and is equipped with GPS, the Blackberry phone (with GPS) reports its current locations to the Web Server regularly and the Server publishes the information to the phone owner and other recipients (chosen by the owner of the phone), so that they can know where the owner is and where he/she has been. Typical usages include:

- Show myself and others where I am and where I have been on a map
- How far I have traveled and for how long?
- I am a cab/bus driver and I would like my company and customer to find me
- Many others you can think of ...

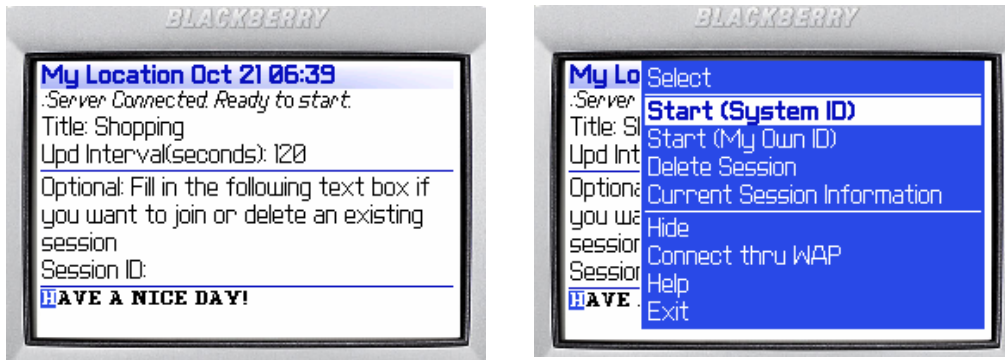
The application features the following benefits:

- Anyone can know where you are online (with your permission).
- It is a Blackberry Service, so that it can run in the background without interfering with your other activities, such as making phone calls or playing games.
- You can start and stop the service anytime. You can give a title to each session and have a session history to trace back
- Your Session ID is unique, and also serves as a secret password to be shared among your friends so that your privacy is protected. (You can also choose an easy-to-remember session ID)
- You can send email and sms to your friends giving your location direct from your Blackberry phone about your location right from your Blackberry phone.
- If the GPS on your device is blocked by obstacles, the application continues and will report your location automatically when GPS is back
- Very little wireless data produced
- Very easy and simple to use

The system includes the My Location application on Blackberry phone and a Web Service maintained by Microhill.

2. How to Use My Location

2.1 Start the Service



After you launch the application, type in a Title for the new session and a desired interval (in seconds) that you would like your phone to periodically report your location to the server. Then click the menu item **Start (System ID)** or **Start (My Own ID)** from the menu. Wait a while (about 5 seconds), and the service will be started.

Start (System ID): Session ID is provided by the system randomly. It is more secure to protect your locations from unauthorized use in this way

Start (My Own ID): Session ID is assigned to you exclusively like a telephone number. It is more convenient since you have a fixed number to share your location information to others. You can choose your own favorable ID. You must first apply the ID.

If you want to join an existing session and you know its ID, just put the ID at the text box **Session ID** before you start the service.

Notes: Your Blackberry must have access to Internet and be equipped with GPS. To check the GPS availability, go to Home->Options->Advanced Options->GPS, and Refresh from the menu. The GPS must also be on.

Choose **Run Into Background** from the menu to bring it to the background.

2.2 Stop the Service

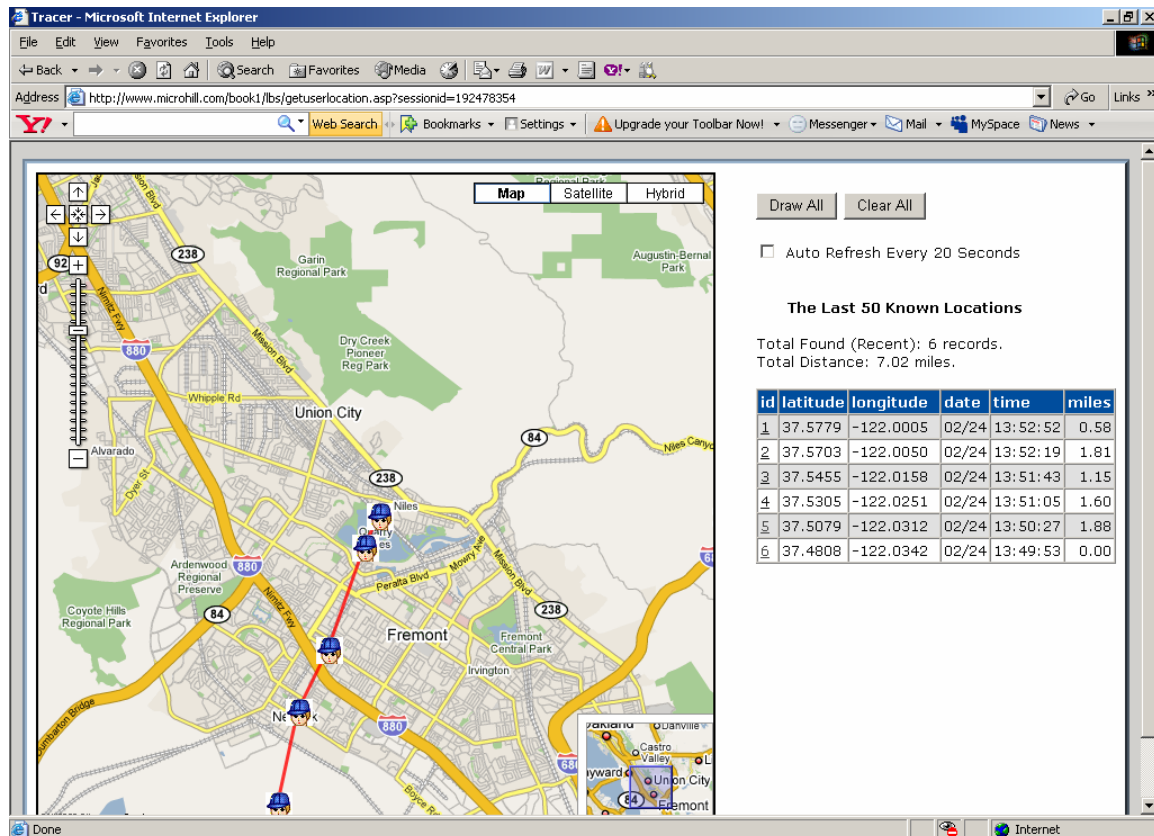
To stop the service, click the **Stop Tracking** from the menu.

2.3 View the location on a map

On *any* internet Browser, visit use the URL link below (change the session ID accordingly):

<http://www.microhill.com/lbs/getuserlocation.asp?sessionid=192478355>

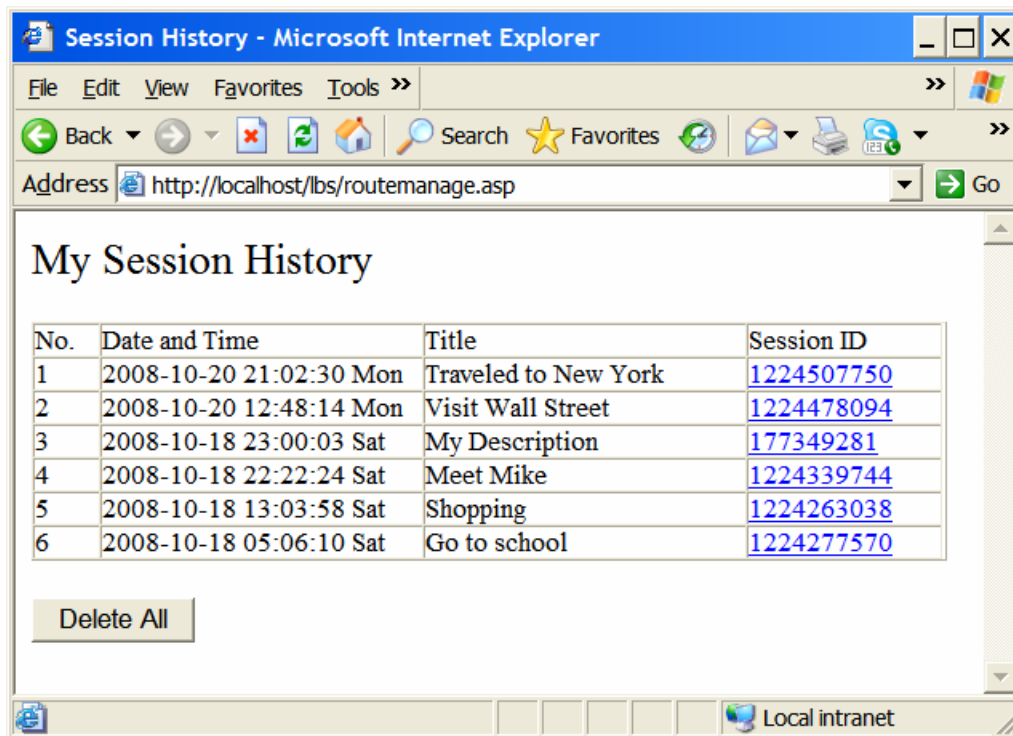
You and your friends must know the session ID before they you can access the detail information of the locations, distance and time, etc ..



2.4 View the Session History

Visit the web page using any browser: <http://www.microhill.com/lbs/login.htm>

By providing your Blackberry's 8-Character PIN number, you can login to the system and take a look at all your historic sessions. Click any session ID, you can see the details of the route information.



2.5 Send Email or SMS with the map link

Choose **Copy URL to Clipboard** from the menu and then switch to the device's email or sms application. Paste the copied link to your email or sms body and send to your friends.

3. How To Get More Information

Please email: mhsupport@okey.net